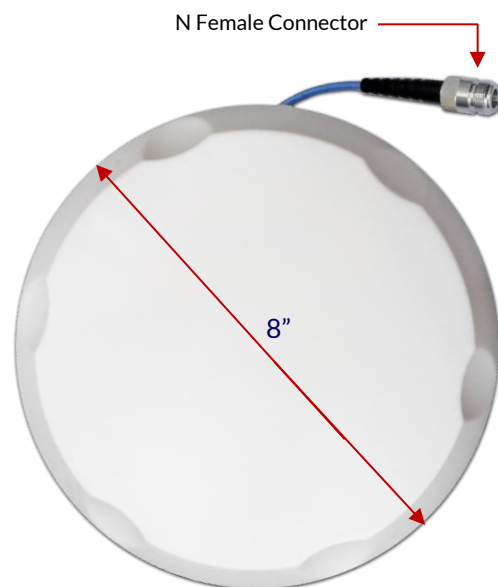
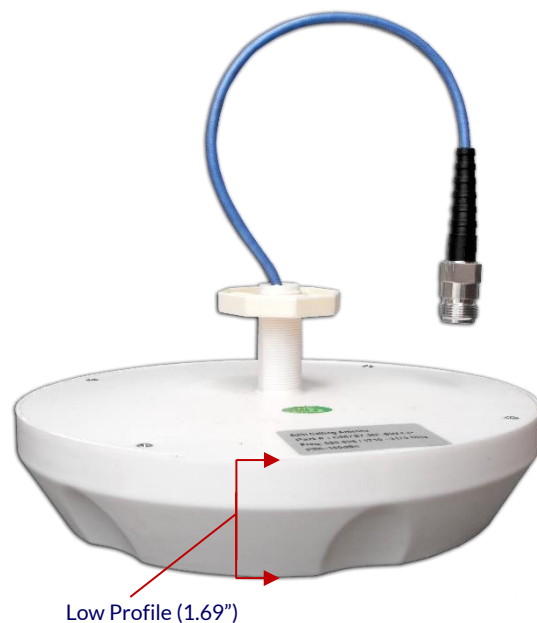


SPECIFICATIONS

Description	Specification	
Frequency Range	698-960 MHz	1710 ~ 2700 MHz
Gain	2dBi	6dBi
VSWR	< 1.5	
Impedance	50 Ω	
Polarization	Vertical	
BW/Azimuth	360 °	
BW/Elevation	80 °	
PIM	> 153dBc (43dBm x 2)	
Connector	N (Female)	
Dimensions	203 x 43 (mm) / 8" x 1.69"	
Weight	0.2kg / 0.44lb	
Temperature	-40°C ~ +80°C	
Mounting	Ceiling Tile / Bracket	
Color	Ivory	
Application Image #1	Application Image #2	



FEATURES:

This multi-band Low PIM Indoor Ceiling Mount Antenna is one of the best performing DAS antennas on the market today. Its low-profile sleek design blends in perfectly in office environments for an unobtrusive appearance. Ideal for a wide range of applications including: WLL, GPS, WLAN, WISP, WiMax, SCADAA, LMR, Cellular, Paging, PCS, LTE, UMTS, CDMA and AWS applications. The radiating pattern of this antenna is omni directional, therefore it is best installed in a centralized location on the ceiling of the area you want to improve reception to. The area of coverage from this antenna will vary in size when used in an inactive DAS environment. The input signal together with your link budget will determine what your final coverage area will be.

- Multi-Band (698-2700 MHz)
- Unobtrusive - Low Profile Design
- Low PIM
- Easily Attaches to Suspended Tiles
- Designed for DAS or Wi-Fi applications