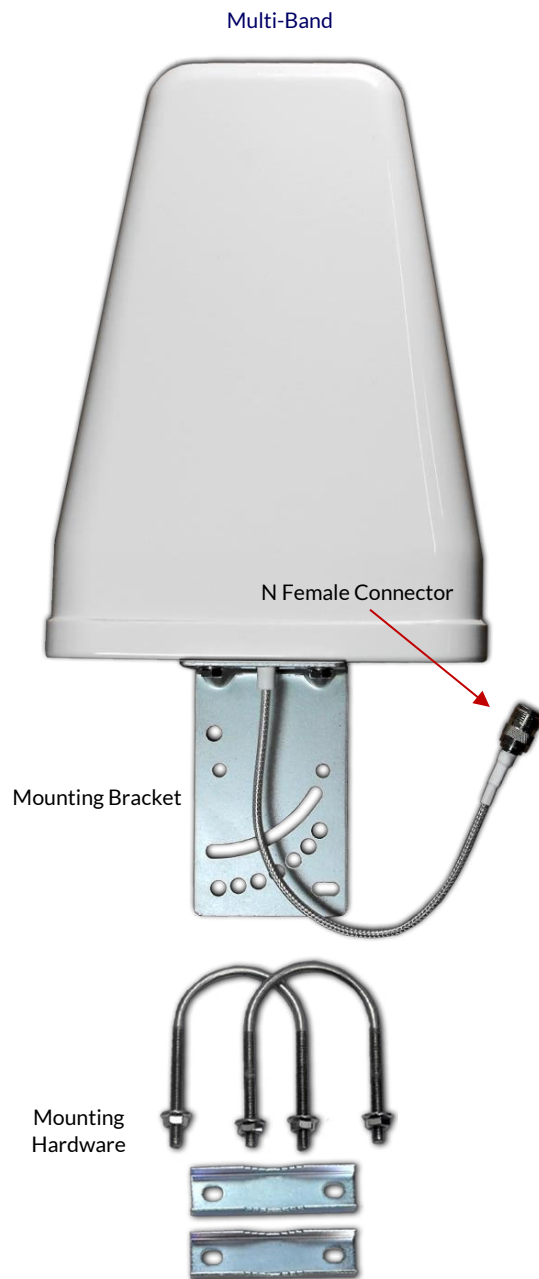


**SPECIFICATIONS**

Description	Specification
Frequency Range	698 -960 / 1710 ~ 2700 MHz
Gain	9.5 / 11 dBi
VSWR	< 1.5
Impedance	50 $\Omega$
Polarization	Vertical
BW/Azimuth	90°
BW/Elevation	65°
Front-to-back Ratio	$\leq$ 23dB
Connector	N Female / RG142 Coax
Max Input Power	200 W
Dimensions	12.6" x 8.46" x 2.56" / 330 x 215 x 65 mm
Weight	350g (0.94 lbs)
Temperature	-40°C ~ +80°C
Mounting	Pole (2" Dia.) / Wall (Optional Bracket)
Color	Ivory
Application Image (Donor)	Application Image (Service)

**FEATURES:**

This Multi-band / Wide Frequency Range Log Periodic Yagi antenna can be used either as a donor antenna or a service antenna depending on your application. With its 65° beam-width it is ideal for capturing a weak incoming signal in a specified direction. It performs exceptionally well with all protocols. The pigtail of this antenna is a high quality RG142 communications grade coax with N Female RF connector.

All JDTECK's antennas are tested for optimal return loss before shipping.

• Multi-Band (698~2700 MHz) • Supports All Protocols • High Gain • UV Protected • Designed for DAS or Wi-Fi applications.