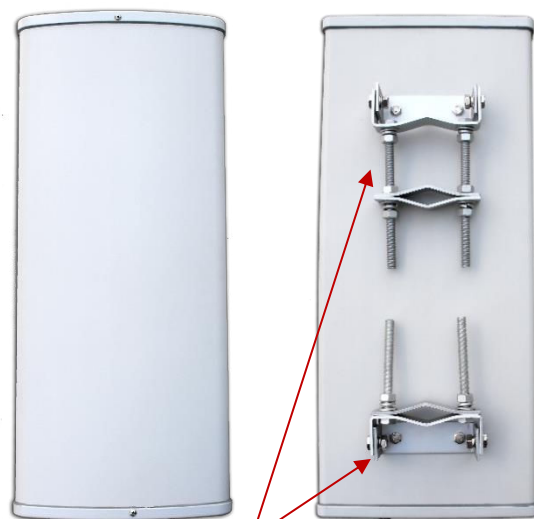


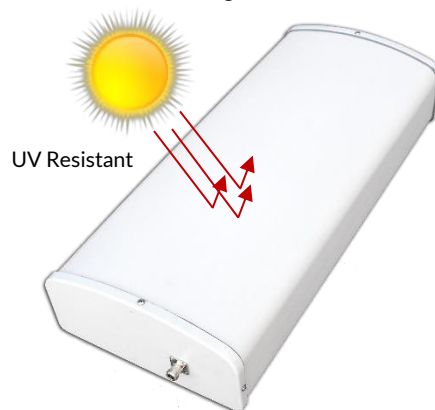
SPECIFICATIONS

Description	Specification	
Frequency Range	698-960 MHz	1710 ~ 2700 MHz
Gain	11dBi	12dBi
VSWR	< 1.5	
Impedance	50 Ω	
Polarization	Linear, Vertical	
BW/Azimuth	65 °	
BW/Elevation	30 °	
Front to Back Ratio	>27dB	
Connector	N (Female)	
PIM	140dBc	
Power Handling	200W	
Dimensions	650 x 280 x 135 (mm) / 25.59" x 11.02" x 5.31"	
Weight	8kg / 17.6lb	
Temperature	-40°C ~ +80°C	
Mounting	Pole mount	
Environmental	IP65	

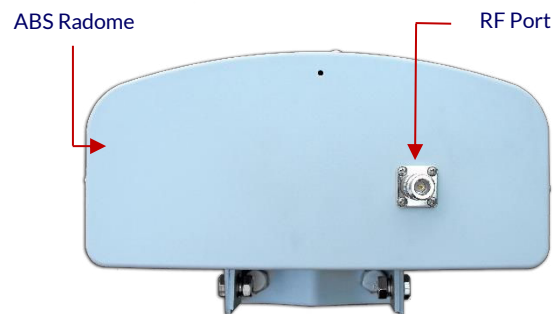
Application Image



Mounting Brackets



UV Resistant



ABS Radome

RF Port

FEATURES:

This multi-band sector antenna can be used as either a donor or service antenna depending on the signal propagating requirements of your application. Ideal for a wide range of applications including: WLL, GPS, WLAN, WISP, WiMax, SCADAA, LMR, Cellular, Paging, PCS, LTE, UMTS, CDMA and AWS applications. It has very good return loss and gain across the entire band as well as good front to back ratio. It is UV resistant and well made. All JDTECK antennas are tested for optimal return loss before they ship.

- Multi-Band (698-2700 MHz) • High Gain • PIM Rated • N Type Connector • Stainless Steel Bolts • Tilt-Adjusting Brackets • Easy to Install